

# Heke Rua Archives (HRA)

December 2020

A new resilient purpose-built Archives facility in Wellington will house and protect our memory of government and taonga to best practice standards and provide specialist facilities for conservation and digitisation at scale. The new building will be connected with the National Library by an air-bridge which allows us to make easy transfers between buildings and better collaboration across the campus.

Facilities within the new building will be shared by Archives New Zealand, National Library of New Zealand and Ngā Taonga Sound & Vision. These include:

- Secure loading and receiving areas
- AV suites
- Digitisation spaces
- Conservation laboratories
- Office workspaces
- Staff end of trip facilities and bike parks
- Seminar and meeting facilities
- Visitor facilities

The new Archives building is designed to protect our people and collections in a one in 1800-year event. The new building will sit on base isolators designed to withstand a one in 1000-year earthquake. The collection spaces will be designed with controlled environment conditions to maintain our collections for future generations. World-class laboratory spaces will provide the best preservation needs.

The building and land is owned by Canadian Mutual Fund, PSPiB/CPPIB Waiheke Inc. with the Department of Internal Affairs (DIA) as the long-term building leaseholders.

## Indicative timeline

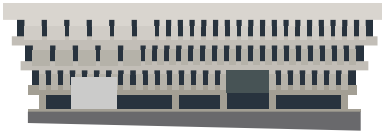
- Design completed – mid-2021
- Construction on site starts – late 2021
- Construction completed – early 2025
- Relocation of holdings from the current Archives building – 2025 and 2026
- Facility operational and staff move into the new Archives building – late 2025

## Project team

- Sarah Apperley, Project Manager
- Rocio Gambogi, Project Coordinator
- Wendy Abbott, Business Analyst
- Paul Marlow, ICT Project Manager
- Kim Boyce, FF&E Surveyor

## External consultants

- RCP, External Project Managers
- Warren & Mahoney, Architects and Lead Designer
- Aurecon, Structural and Façade Engineers
- Norman Disney & Young, Services Engineers
- LT McGuinness Ltd, Construction Contractor



# Heke Puna Library (HPL)

December 2020

Alterations to the current National Library building will enable co-location and greater collaboration between the National Library of New Zealand, Ngā Taonga Sound & Vision and Archives New Zealand. This project is also core to the creation of a vibrant new campus-like setting where visitors can access and learn about our nation's recorded and documentary heritage with three of these major institutions in one place.

Budget 2020 included funding for the design and procurement process for National Library alterations. A Budget 2022 submission will be required to deliver the construction of the National Library and to support Ngā Taonga Sound & Vision's long-term property requirements.

The Design team has recently been appointed.

## Indicative timeline

- Heke Puna Library designs completed – mid-2022

## Subject to Budget 2022 funding:

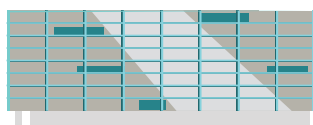
- Construction commences – early 2023
- Construction completed – mid-2025
- Facility fully operational – end of 2025

## Project team

- Scott Cameron, Project Manager
- TBA, Project Coordinator
- Wendy Abbott, Senior Business Analyst

## External consultants

- TSA Management, External Project Managers
- Studio Pacific Architecture, Architects
- Aurecon, Structural Engineer



# Regional Shared Repository (RSR)

December 2020

A fit-for-purpose, resilient and sustainable facility in the lower North Island, the RSR will provide specialist preservation storage across the National Library of New Zealand, Ngā Taonga Sound & Vision and Archives New Zealand with the potential for wider sector use. This involves the acquisition of a suitable piece of land and the delivery of design, build, fit-out and the transfer of collections to the new facility. This facility will store low use and digitised documentary and audio-visual heritage and taonga and allow Archives to recommence transfers of government records.

Budget 2020 has funded the land purchase and design of this new storage facility. Subject to Budget 2022 funding is successful construction of the new storage facility is likely to begin in early 2023.

The facility will provide the level of protection and care our documentary heritage requires – temperature and humidity control, appropriate light levels, security and protection from risks such as water damage, fire, earthquake and pests.

The RSR will hold government records, books, videos, microfilm, artworks, films, videos and DVDs, slides, audiobooks, microfilm and cassettes – the list goes on.

## Indicative Timeline

- Land settlement – mid-2021
- Design completed – late 2022

## Subject to Budget 2022 funding:

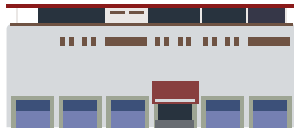
- Construction commences – early 2023
- Construction completed – mid-2025
- Facility operational and collections transfers start – late 2025

## Project team

- Rosie Perez, Project Manager
- Srimal De Costa, Project Coordinator
- Nishanie Pereira, Senior Business Analyst

## External consultants

- The Property Group Limited – Land Acquisition
- TSA Management – External Project Managers



# Wairere House Exit (WHE)

December 2020

Wairere House, an offsite storage facility for the National Library of New Zealand in Whanganui is at the end of its economic life and requires significant investment to maintain it to a level suitable for the storage of the Alexander Turnbull Library collections.

To continue to safeguard the collections, they are being relocated to suitable repository spaces within Auckland and Wellington facilities. This includes a new purpose-built Controlled Atmospheric Room (CAR) in Auckland Archives to store aerial prints and microfilm and the relocation of newspaper collections to National Library Wellington facilities.

These collection moves are short-term in order to continue to safely store the collections until the Regional Shared Repository building is operational.

Also, within the Wairere House Exit project is the rehoming of the Overseas Published Collections (OPC).

These books are currently housed at Wairere House Whanganui and in Rugby House Wellington.

Several avenues are currently being pursued to facilitate the rehoming of these books so that we can make room to grow our Pacific and New Zealand collections and we can continue to build well-managed coherent collections that support the National Library's long-term functions.

## Indicative timeline

- Alexander Turnbull Library newspapers relocated to Wellington – early 2021
- Controlled Atmospheric Room (CAR) completed – late 2021
- Exit of Wairere House completed – mid-2022

## Project team

- Lorraine Laulau, Senior Project Manager
- Laura Travers-Jones, Project Coordinator

## External consultants

- FIL – Collection Relocation
- Aquaheat – Building Contractor for CAR
- Q Construction – Building Subcontractors



# Archival Information Management System project (AIMS)

December 2020

The AIMS project is taking the existing data from Archives four online systems – Archway, ALF, CV and Preservation databases and combining these into one collections system. In real terms this means we're mapping over a billion data points from these four systems into one new collections system. Because our data is about taonga tuku iho it is stored on-shore in Auckland to ensure data sovereignty.

In 2019 an 11-year contract was signed with Axiell Pty Ltd who will not only maintain the new Collections system but will continuously improve the system.

Budget 2019 granted funding to implement and improve the collections system for the next four years. After the initial investment, improvements will still be made to the system as part of the worldwide whole of product development.

## Indicative timeline

- **2020 to early 2021**
  - Designing the new functions and possible future product enhancements
  - Building how the new search will function for the public
  - Mapping the data from the four systems into the new Collections system
- **Early 2021**
  - Integrating AIMS with Archives other systems – Rosetta and Ingestor
  - Testing – system and business systems testing
  - Training is developed
  - Business readiness assessments begin
- **Mid 2021**
  - Training
  - The new Collections system is delivered
  - Post implementation support

## Project team

- Lisa Austin, Product Owner
- Wendy Griffin, Senior Project Manager
- Nicola Barr, Change Manager
- Katherine Robinson, Project Coordinator
- Denise Williams, Tāhuhu Lead SME and Director of Transformation Archives NZ

## External consultants

- Axiell – Collections system provider



# Te Puna Rua Collaboration (TPRC)

December 2020

This change work will identify and lead operational changes to enable a collaborative approach and new ways of working between Archives New Zealand, the National Library of New Zealand and Ngā Taonga Sound & Vision. Tāhuhu also provides a platform for collaboration and partnership with other institutions within the wider heritage sector.

The Te Puna Rua Collaboration (TPRC) team will lead the development of the change plan to ensure alignment between Archives, National Library and Ngā Taonga strategies. This workstream will also lead engagement with the wider Te Tari Taiwhenua business groups to help implement changes to business processes, technology, job functions and organisational culture.

The TPRC workstream will ensure there is appropriate operational business input and support into the design requirements for staff across our documentary heritage organisations.

## Project team

*This team will grow to support the Tāhuhu programme of change over the next 6-7 years.*

- Richard Foy, Te Puna Rua Collaboration Director
- Denise Williams, Tāhuhu Lead SME and Director of Transformation Archives
- Mark Crookston, Tāhuhu Lead SME and Programme Director  
Documentary Heritage National Library
- Tania Vincent, Tāhuhu Lead SME and Chief Operating Officer Ngā Taonga Sound & Vision



# Kia Rite

December 2020

This workstream focusses on business readiness. Logistics work is underway to prepare the holdings and collections associated with their relocation into the new purpose-built facilities, Heke Rua Archives and the Regional Shared Repository. This involves labelling, reboxing where required, reshelving and ensuring the accuracy of the information held in the Archives holdings.

Kia Rite will ensure that all holdings in the Archives New Zealand Mulgrave Street repository meets our four minimum relocation standards:

1. The record has a valid archival reference
2. The record is packaged and labelled appropriately for relocation and transport
3. The container is described in Archway
4. The container has accurate location data in our online system ALF (Archway Location Finder)

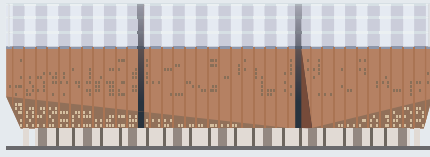
By creating secure packaging and accurate data we not only ensure the protection of our holdings, but also increase accessibility for staff and the public for years to come.

## Indicative timeline

- First phase of surveying the holdings completed – mid-2021
- Box making solution procured – mid-2021
- First phase of remediation completed – mid-2024
- Final surveying and location audit completed – late 2024
- All holdings prepared for relocation – mid-2025

## Project team

- Rebecca Nuttall, Team Leader
- Wikitoria Rakete, Archivist
- Alice McGeachie, Archives Support Assistant
- Andrew Wright, Archives Support Assistant
- Catherine Jacobs, Archives Support Assistant
- Dion Rogers, Archives Support Assistant



# Heke Rua Archives (HRA)

December 2020

A new resilient purpose-built Archives facility in Wellington will house and protect our memory of government and taonga to best practice standards and provide specialist facilities for conservation and digitisation at scale. The new building will be connected with the National Library by an air-bridge which allows us to make easy transfers between building and better collaboration across the campus.

Facilities within the new building will be shared by Archives New Zealand, National Library of New Zealand and Ngā Taonga Sound & Vision. These include:

- Secure loading and receiving areas
- AV suites
- Digitisation spaces
- Conservation laboratories
- Office workspaces
- Staff end of trip facilities and bike parks
- Seminar and meeting facilities
- Visitor facilities

The new Archives building is designed to protect our people and collections in a 1 in 1800-year event. The new building will sit on base isolators designed to withstand a 1 in 1000-year earthquake. The collection spaces will be designed with controlled environment conditions to maintain our collections for future generations. World-class laboratory spaces will provide the best preservation needs.

The building and land is owned by Canadian Mutual Fund, PSPIB/CPPIB Waiheke Inc. with DIA as the long-term building leaseholders.

## Indicative timeline

- Design completed – mid-2021
- Construction on site starts – late 2021
- Construction completed – early 2025
- Relocation of holdings from the current archives building – 2025 and 2026
- Facility operational and staff move into the new Archives building – late 2025

## Project team

Sarah Apperley, Project Manager  
Rocio Gambogi, Project Coordinator  
Wendy Abbott, Business Analyst  
Paul Marlow, ICT Project Manager  
Kim Boyce, FF&E Surveyor

## External consultants

RCP, External Project Managers  
Warren & Mahoney, Architects and Lead Designer  
Aurecon, Structural and Façade Engineers  
Norman Disney and Young, Services Engineers  
LT McGuinness, Construction Contractor