



TĀHUHU

Preserving the Nation's Memory

Information pack

December 2020



Te Tari Taiwhenua
Internal Affairs

Tāhuhu: Preserving the Nation's Memory

Tāhuhu: Preserving the Nation's Memory (Tāhuhu) is a programme which includes the upgrade and construction of modern, purpose-built facilities designed to ensure New Zealand's documentary heritage is preserved and protected across Archives New Zealand (Archives), the National Library of New Zealand (National Library) and Ngā Taonga Sound & Vision (Ngā Taonga).

The Tāhuhu Programme includes:

- The new Archives Wellington building and airbridge
- The design for alterations to the National Library
- Land purchase and design of a new regional storage repository
- Relocation of documentary heritage and taonga from Archives Wellington Mulgrave St facility to the new Archives building
- Replacing Archives four online systems to a single new collections system
- National Library collections relocated from Wairere House, Whanganui.

The Tāhuhu Programme will enable greater collaboration across these three institutions which will include shared services between Archives, the National Library and Ngā Taonga such as reading rooms, conservation laboratories and digitisation suites, specialist repositories and processing areas.

This Programme provides a once-in-a-lifetime opportunity to create a national documentary heritage campus within the Parliamentary precinct and build more resilience across the sector.

Background

The Tāhuhu: Preserving the Nation's Memory (Tāhuhu) Programme grew out of a property review conducted by the Department of Internal Affairs. The review identified over 60% of Archives and National Library buildings in the North Island are not fit-for-purpose. Archives Wellington has been full since 2017 and the National Library will be close to capacity by 2030.

Archives and the National Library are the official stewards or kaupupuri of our nation's documentary heritage and taonga, valued at \$1.5 billion and growing. The Department of Internal Affairs (DIA) on behalf of the Crown have statutory responsibilities to collect, preserve, protect and make accessible this heritage for all New Zealanders.

Together, the valuable collections include government records, publications, books, manuscripts, artwork, scientific data, images, films and much more. Across the entire portfolio, these physical records total over 271,000 linear metres (271km) and are continually growing through transfers of public records from public sector organisations, donations to the Alexander Turnbull Library and purchases of New Zealand taonga.

In 2018 Ngā Taonga was included within the scope of the Tāhuhu Programme, as New Zealand's audio-visual archive. Ngā Taonga's central Wellington facility was no longer fit-for-purpose and the collection had outgrown their storage capacity. Ngā Taonga cares for New Zealand's most extensive audio-visual collection with over 980,000 items. Ngā Taonga's Wellington-based staff moved into the National Library Molesworth Street building in September 2019.



Carvers at work on Poupou
inside new Meeting House
at the Orakei Marae, Auckland.
Photo: G. Riethmaier

Te Tiriti and Māori Partnerships

The Tāhuhu Programme is guided by the principles of Tiriti o Waitangi – partnership, participation and protection. These underpin the relationship between the Crown and Māori. The Tāhuhu Programme will engage with mana whenua and iwi Māori as we transform, strengthen and future-proof Aotearoa New Zealand's documentary heritage and taonga.

The underlying guiding principal adopted by DIA for the development and delivery of the He Tohu exhibition in 2017 was 'partnership'. The Department took some bold steps into a largely unknown and untested space to do their best to ensure that partnership with iwi Māori was considered and invested in.

Tāhuhu provides a further opportunity for the Treaty relationship to be enacted, put to the test and celebrated.

The Tāhuhu team, look forward to working together with iwi Māori on this important and exciting programme of work, which will transform the way, we as a nation, collect, preserve and make available our nations collective memories.

The Programme



TĀHUHU
Preserving the Nation's Memory

The Projects - heke



HRA

Heke Rua
Archives



HPL

Heke Puna
Library



RSR

Regional Shared
Repository



WHE

Wairere
House Exit



AIMS

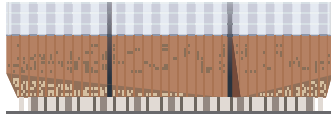
Archival Integrated
Management System



TPRC

Te Puna Rua
Collaboration

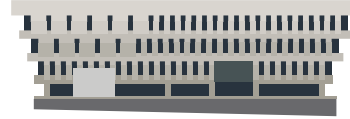




Heke Rua Archives (HRA)

A new resilient purpose-built Archives facility in Wellington will house and protect our memory of government and taonga to best practice standards and provide specialist facilities for conservation and digitisation at scale. The building will be connected with the National Library by an air-bridge which allows for easy transfers between buildings and better collaboration across the heritage campus.

Facilities within the new building will be shared by Archives, National Library and Ngā Taonga.



Heke Puna Library (HPL)

Alterations to the current National Library building will enable co-location and greater collaboration between Archives, National Library and Ngā Taonga. This project is also core to the creation of a vibrant new campus-like setting where visitors can access and learn about our nation's recorded and documentary heritage with three of these major institutions in one place.



Regional Shared Repository (RSR)

A fit-for-purpose, resilient and sustainable facility in the lower North Island, the RSR will provide specialist preservation storage across the National Library, Ngā Taonga and Archives with the potential for wider sector use. This involves the acquisition of a suitable piece of land and the delivery of design, build, fit-out and the transfer of collections to the new facility.

This facility will store low use and digitised documentary and audio-visual heritage and taonga. It will also enable Archives to recommence transfers of government records.



Te Puna Rua Collaboration (TPRC)

This change work will identify and lead operational changes to enable a collaborative approach and new ways of working between Archives, the National Library and Ngā Taonga. Tāhuhu also provides a platform for collaboration and partnership with other institutions within the wider heritage sector.

The TPRC workstream will make sure there is the right level of operational business input and support into the design of requirements for staff across our documentary heritage organisations.

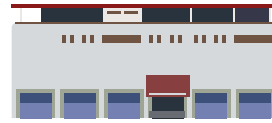
The team will lead the development of the change management plan and lead engagement with the wider Te Tari Taiwhenua business groups to help implement changes to business processes, technology, job functions and organisational culture.



Archival Information Management System project (AIMS)

The AIMS project is taking the existing data from Archives four online systems – Archway, ALF, CV and Preservation databases and combining these into one collections system. This means we’re mapping over a billion data points from the four current systems into one new collections system. Because our data is about taonga tuku iho it is stored on-shore in Auckland to ensure data sovereignty.

AIMS has partnered with Axiell Pty Ltd to develop the new Collections system. The Collections system is a configurable off-the-shelf product that is used around the world by Archives, Libraries and Museums.



Wairere House Exit (WHE)

Wairere House, an offsite storage facility for the National Library in Whanganui is at the end of its economic life and requires significant investment to maintain it to a level suitable for the storage of Alexander Turnbull Library collections.

To continue to safeguard the collections, they are being relocated to suitable repository spaces within Auckland and Wellington facilities. This includes a new purpose-built controlled atmosphere room in Auckland Archives to store aerial prints and microfilm and the relocation of newspaper collections to National Library Wellington facilities.



Kia Rite

This workstream focusses on business readiness. Logistics work is underway to prepare the holdings and collections associated with their relocation into the new purpose-built facilities, Heke Rua Archives and the Regional Shared Repository. This involves labelling, reboxing where required, reshelving and ensuring the accuracy of the information held in the Archives and National Library collections.

By creating secure packaging and accurate data we not only ensure the protection of our holdings, but also increase accessibility for staff and the public for years to come.



Maori foods: Kiekie - School Journal, 1968
Photographer: Helen Buttfeld



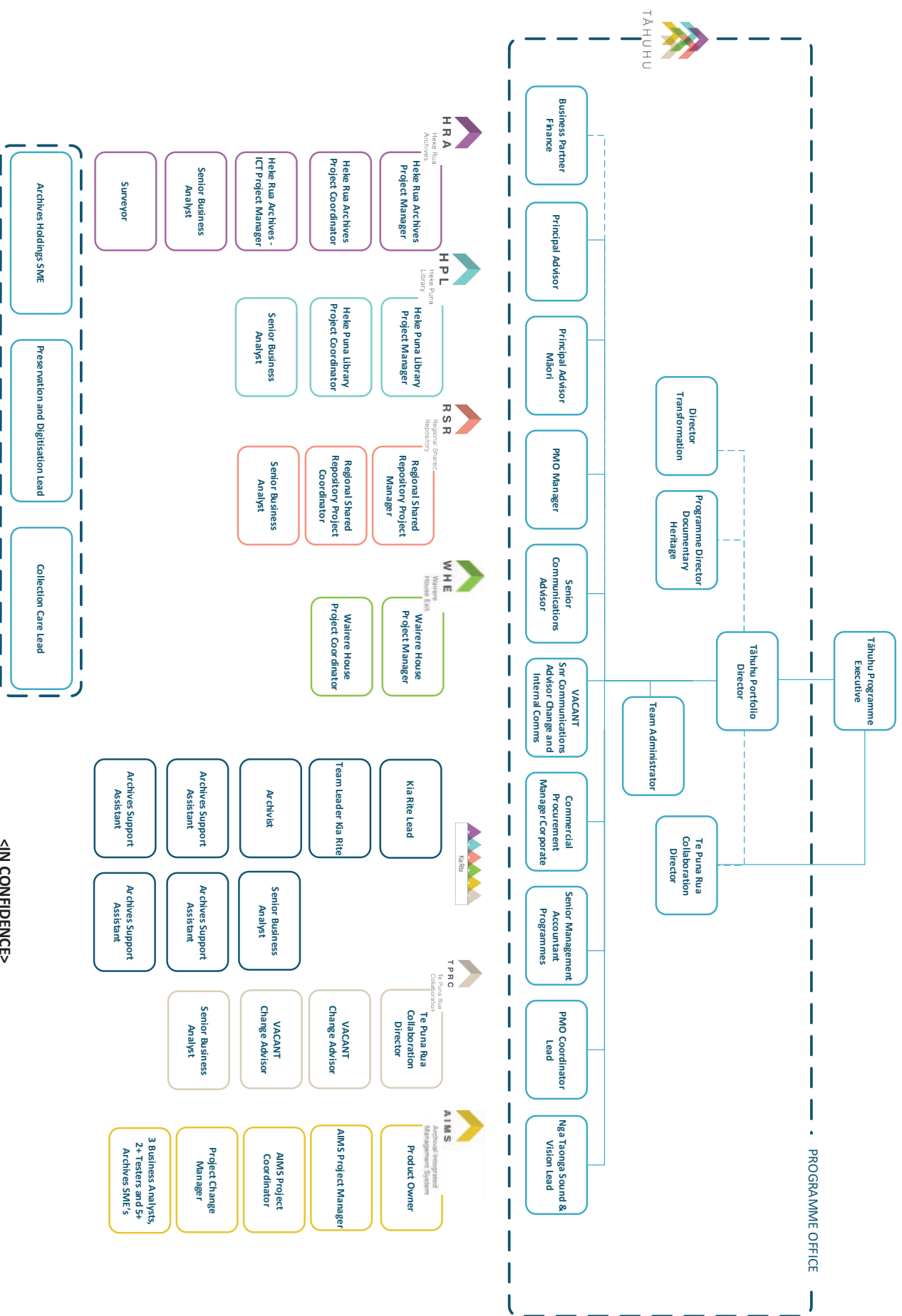
Tāhuhu Subject Matter Experts (SMEs)

These roles have been created to make sure requirements for the building designs meet the needs of staff, public and our documentary heritage. The SMEs will work closely with Project Managers and Functional Design Advisory Group representatives. They will collaborate with staff across National Library, Archives and Ngā Taonga where needed.

The Tāhuhu Programme SMEs cover:

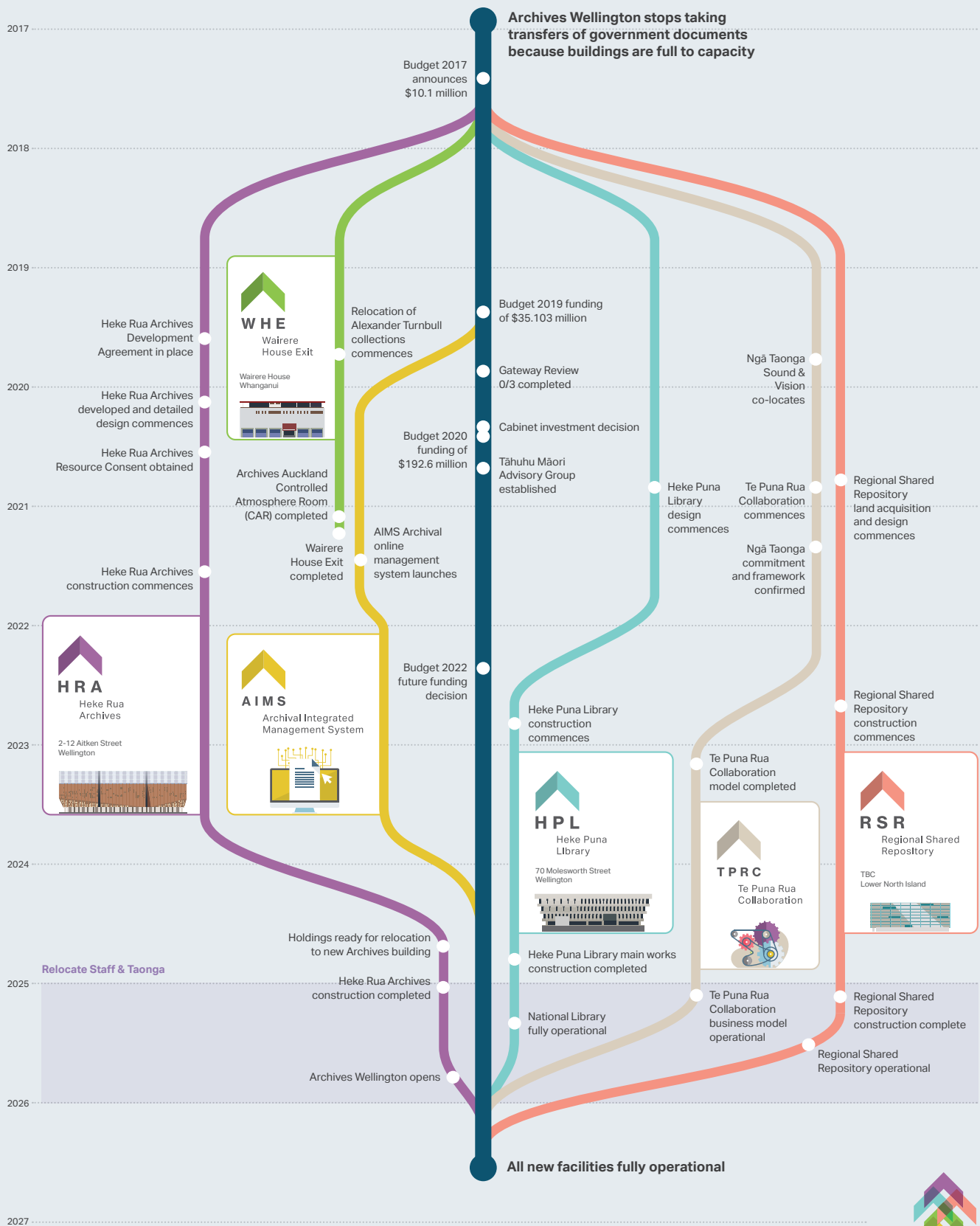
- Reading room operations
- Public spaces
- Māori Tikanga
- Staff facilities
- Flow of items, Conservation and AV Laboratories
- Repositories and storage operations
- IT systems
- Digitisation and digital preservation
- Facilities management and security

TĀHUHU PROGRAMME ORGANISATIONAL CHART



<IN CONFIDENCE>

Tāhuhu Programme: key milestones

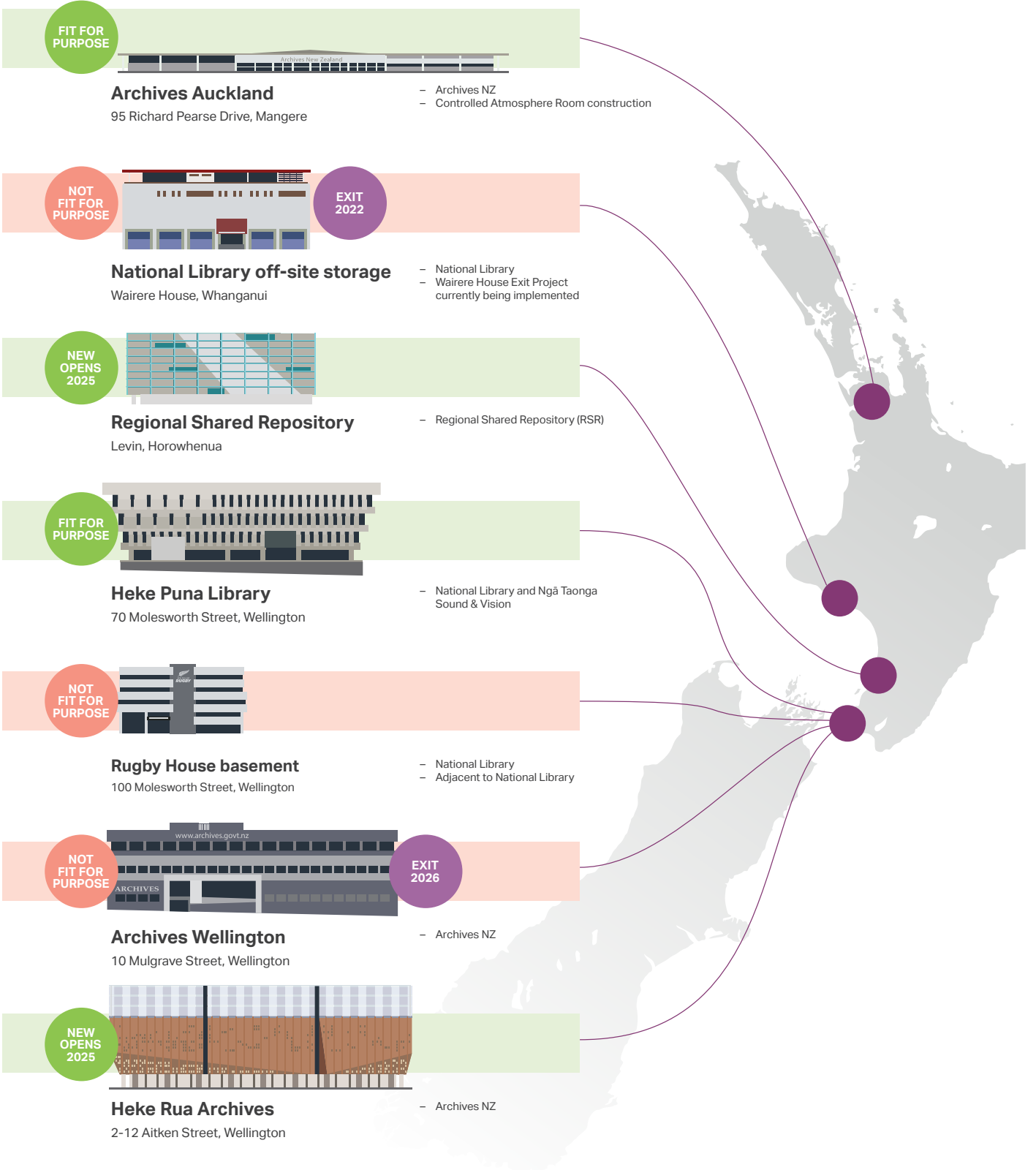


I N - C O N F I D E N C E



Tāhuhu: Preserving the Nation's Memory

Properties within scope



Tāhuhu: Preserving the Nation's Memory

This initiative ensures New Zealand's documentary heritage stored in the North Island is preserved and maintained in fit for purpose facilities.

Before

40% of national collections are held in fit for purpose facilities.

NOT FIT FOR PURPOSE



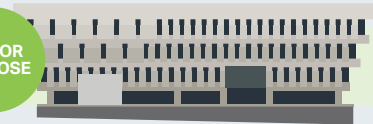
EXIT 2026

Archives Wellington

10 Mulgrave Street, Wellington
1960s former Government Printing Office, converted in 1990 for Archives Wellington. No major upgrades.

- At end of functional life
- 50% seismic resilience
- Poor environmental control
- Frequent plant breakdowns
- High risk of water leaks
- High deferred maintenance

FIT FOR PURPOSE



National Library

70 Molesworth Street, Wellington
1980s purpose designed National Library, partial refurbishment 2012. Ngā Taonga staff currently co-locating with National Library.

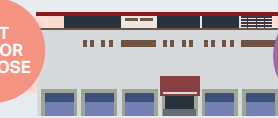
FIT FOR PURPOSE



Archives Auckland

95 Richard Pearse Drive, Mangere
2007 purpose designed Archives. Roof and plant upgrade 2018.

NOT FIT FOR PURPOSE



EXIT 2022

Wairere House Exit

National Library, Whanganui
Whanganui 1970s former National Law Enforcement Data Base ("the Whanganui computer"), converted in 1990s for off-site repository for National Library.

- At end of functional life
- 40% seismic resilience
- Poor environmental control
- Frequent plant breakdowns
- High risk of water leaks
- Flood risk from river

NOT FIT FOR PURPOSE



Rugby House basements

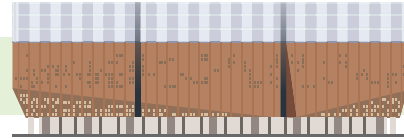
100 Molesworth Street, Wellington
1980s office building with adjoining basement repository space leased by National Library. No major upgrades.

- Due for major upgrade
- 67% seismic resilience
- High risk of water leaks
- Lacks separation of published collections copies

After

100% of national collections are held in fit for purpose facilities.

NEW OPENS 2025

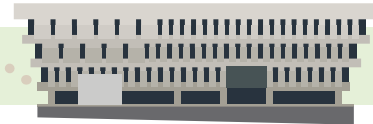


Heke Rua Archives

2-12 Aitken Street, Wellington
Similar capacity to 10 Mulgrave St, Wellington.



Air bridge to link to National Library, provides for a campus setting for collaboration of three institutions.



Heke Puna Library

70 Molesworth Street, Wellington
Outstanding refurbishment works completed. Alterations to accommodate Ngā Taonga Sound & Vision permanently.



Archives Auckland

95 Richard Pearse Drive, Mangere
In good condition.

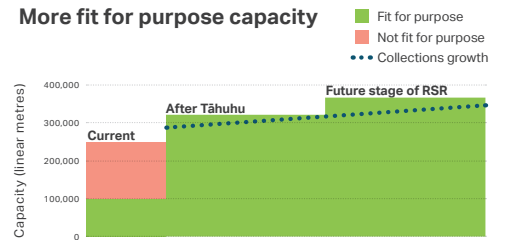
NEW OPENS 2025



Regional Shared Repository

Levin, Horowhenua
Deep storage facility shared by the three institutions and potential for wider system solution including Te Papa. Provide for future growth for national collections.

More fit for purpose capacity



Stay in touch and keep up-to-date

If you have any questions, suggestions or feedback
for the Tāhuhu Programme team, please email
communications.tāhuhu@dia.govt.nz.